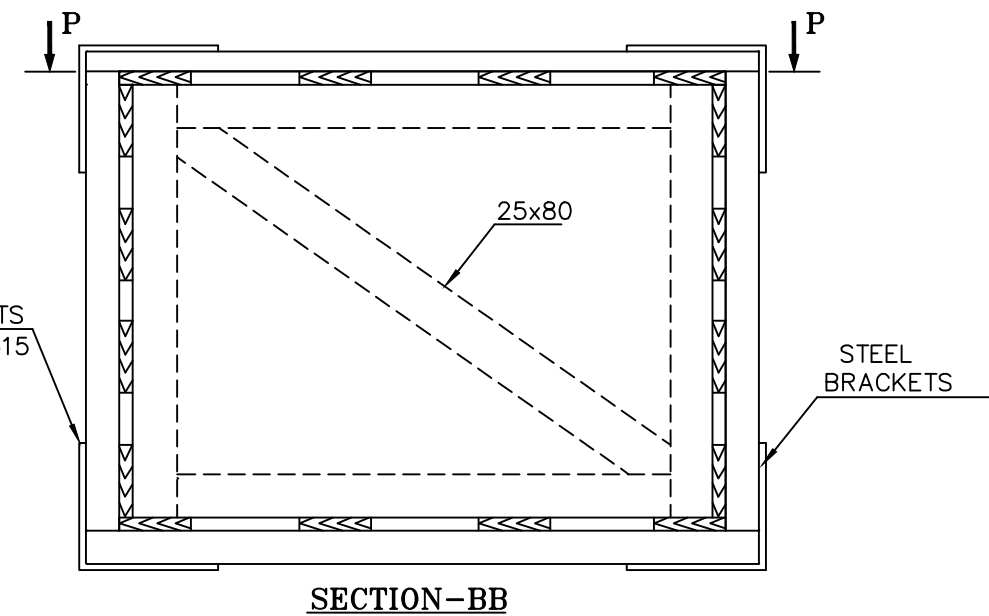
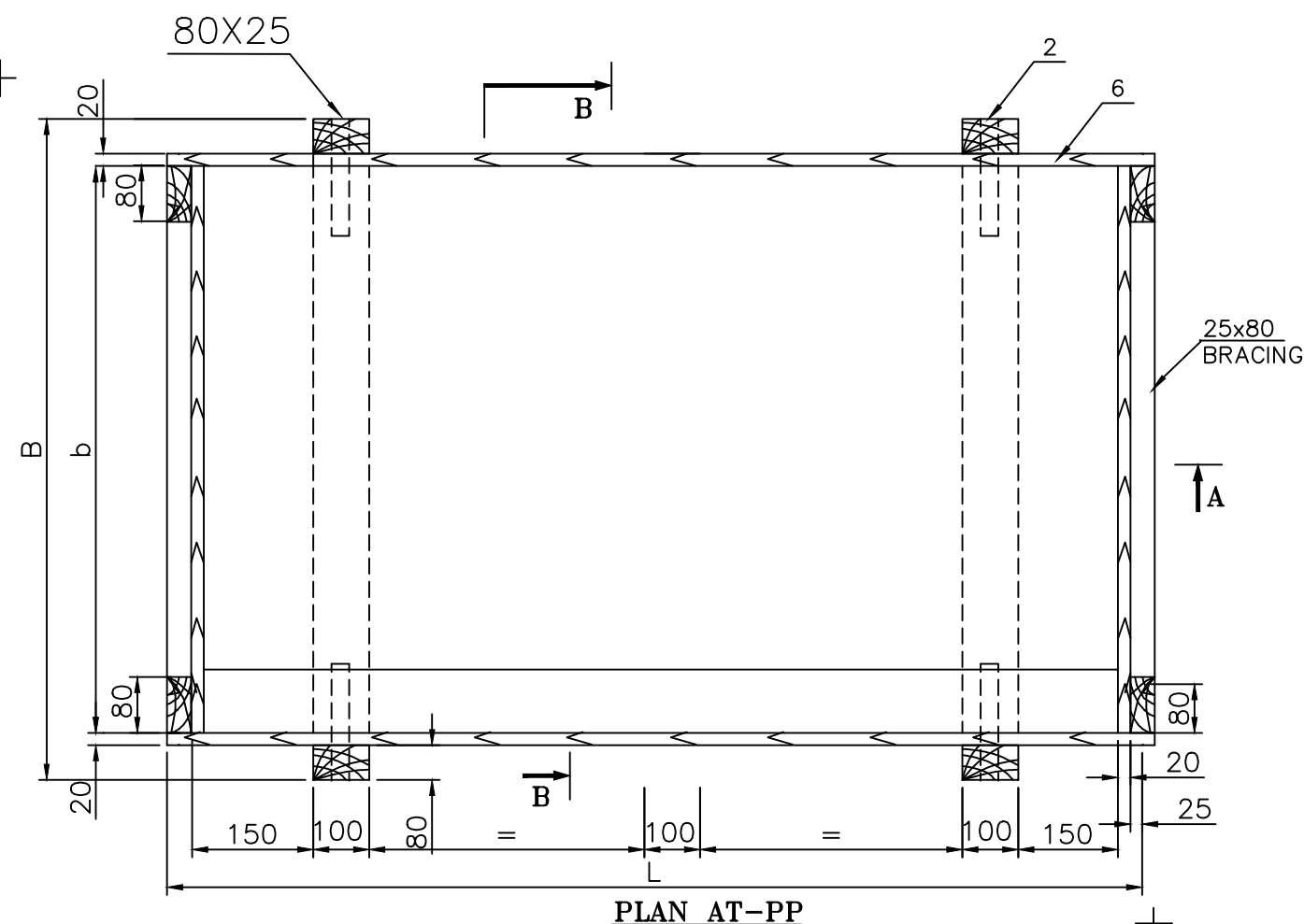


(ALL DIMENSIONS ARE IN mm)


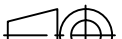
SHT. OF



1. DIMENSIONS LxBxH ARE TO BE MAINTAINED CORRECTLY.
2. WOOD SPECIFIED IN TO HY 51463.
3. CASE TO BE LINED WITH HDPE
TAURPAULLIN 150 GSM AT SIDES,BOTTOM INSIDE & TOP OUTSIDES.
AT TOP TO BE TURNED 80mm ON ALL SIDES AND FIX.
4. HDPE TARPAULLIN 150 GSM PLANKS 25mm THICK AT BOTTOM AT SIDES AND TOP.



REV	DATE	ALTD.
01	09.03.04	APPD.
CHEMICAL TREATMENT REMOVED		

 BHARAT HEAVY ELECTRICALS LTD. HYDERABAD		NAME		SIGN.	DATE	NO.OF VAR.	
		DRN.	SYED NAZEER	<i>[Signature]</i>			
		CHD.	T.MURALI				
		APPD.	C.V.SUBBA RAO				
DEPT. CPDC	UNTO. DIMS. GR. ø/M/F		SCALE NTS	WEIGHT (KG) —NA—	REF. TO ASSY. DRG.	ITEM NO.	NO.OF ITEMS
CODE 840							
TITLE PACKING CASE FOR MISCELLANEOUS ITEM TYPE				CARD CODE	DRAWING NO.		REV.
					3 - CPDC-0042/S		01
					SHT. No		NO. OF SHT.